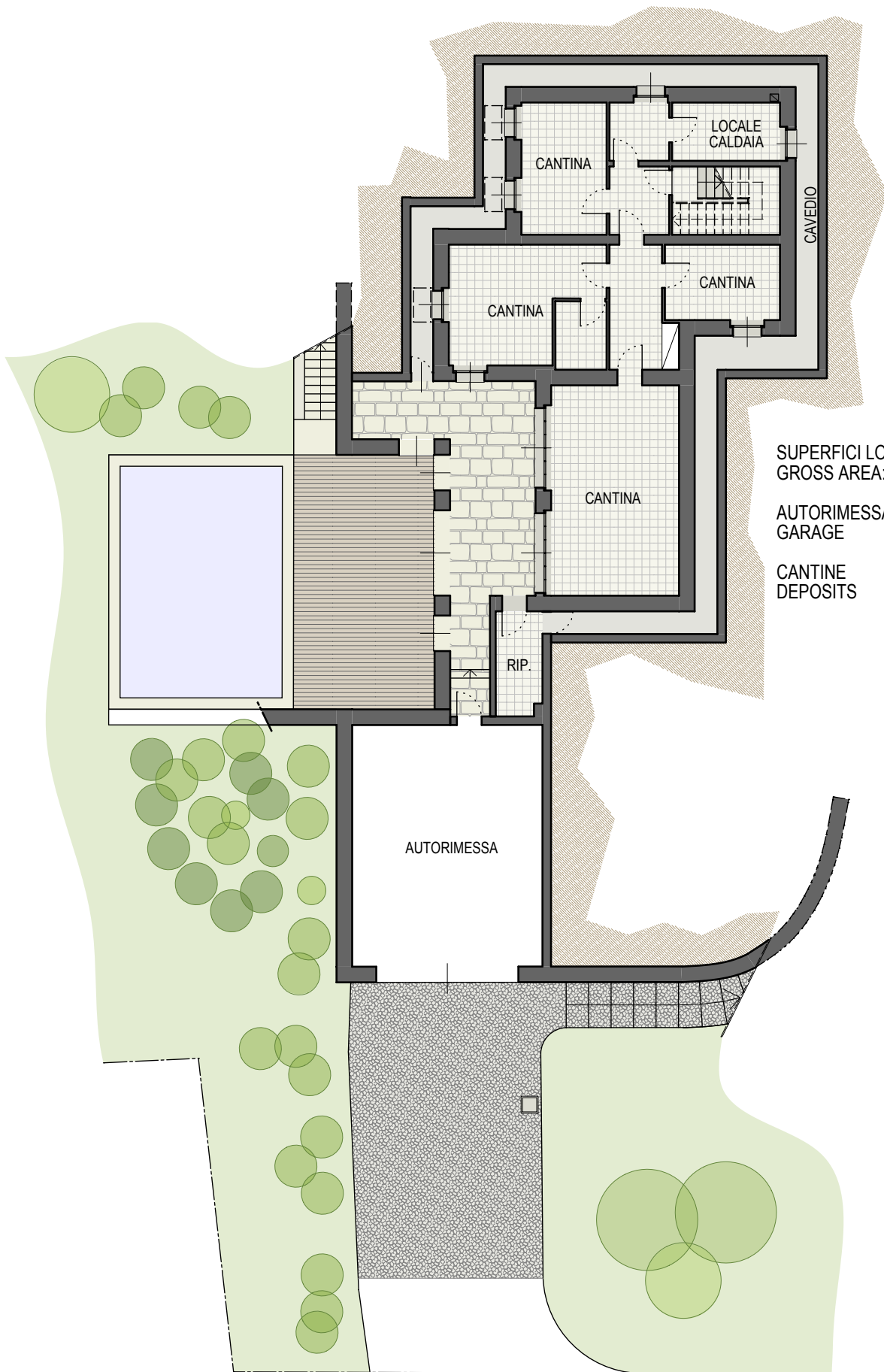


SUPERFICIE LOTTO = 5.198,00 mq
SURFACE LOT

PLANIMETRIA GENERALE
GENERAL PLAN

VILLA C: "AL RIO"



SUPERFICI LORDE:
GROSS AREA:

AUTORIMESSA GARAGE 71,60 mq

CANTINE DEPOSITS 158,78 mq

PIANO SEMINTERRATO
BASEMENT FLOOR

VILLA C: "AL RIO"



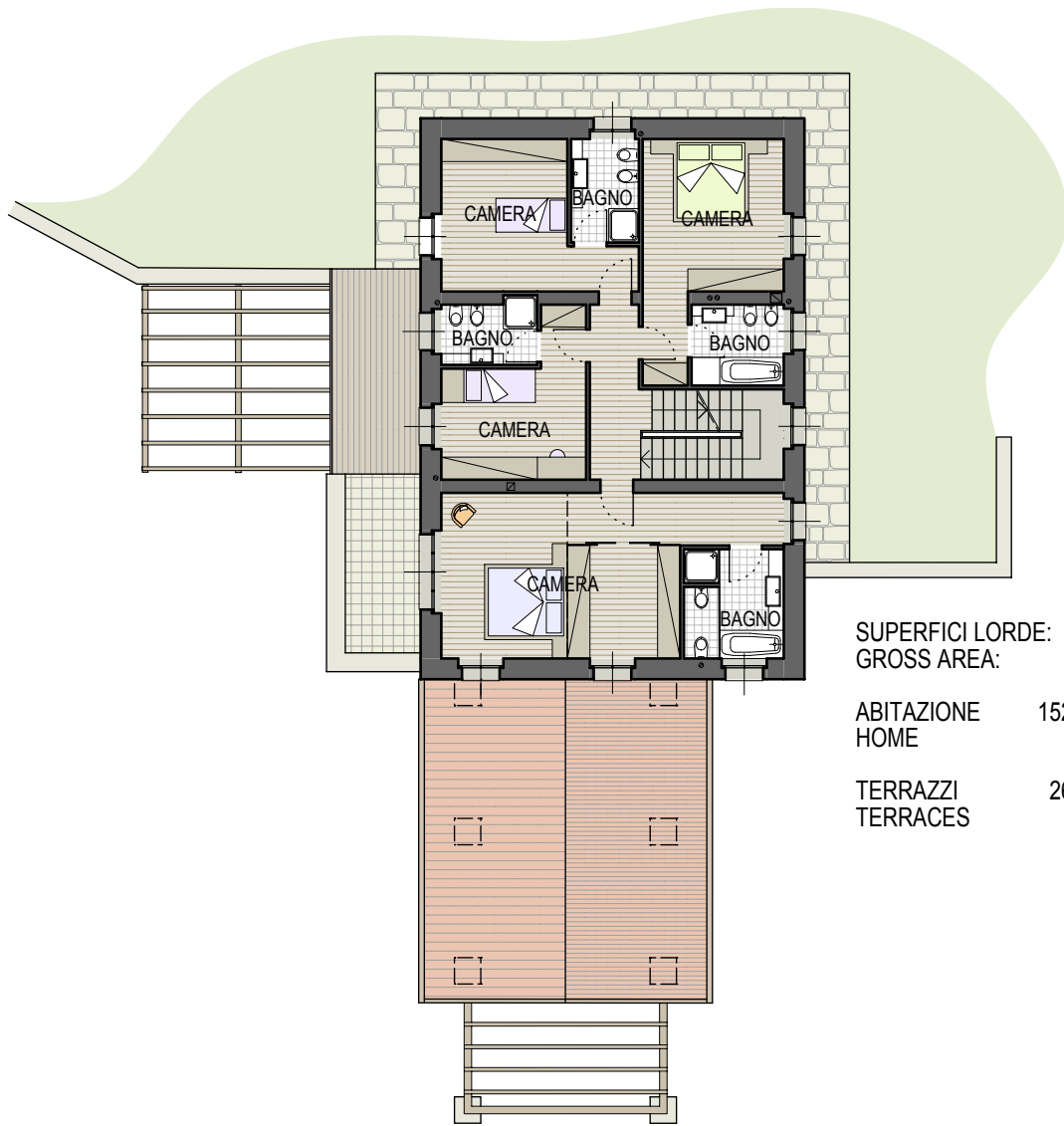
SUPERFICI LORDE:
GROSS AREA:

ABITAZIONE 162,82 mq
HOME

PORTICI 17,52 mq
PORCH

PIANO TERRA
GROUND FLOOR

VILLA C: "AL RIO"



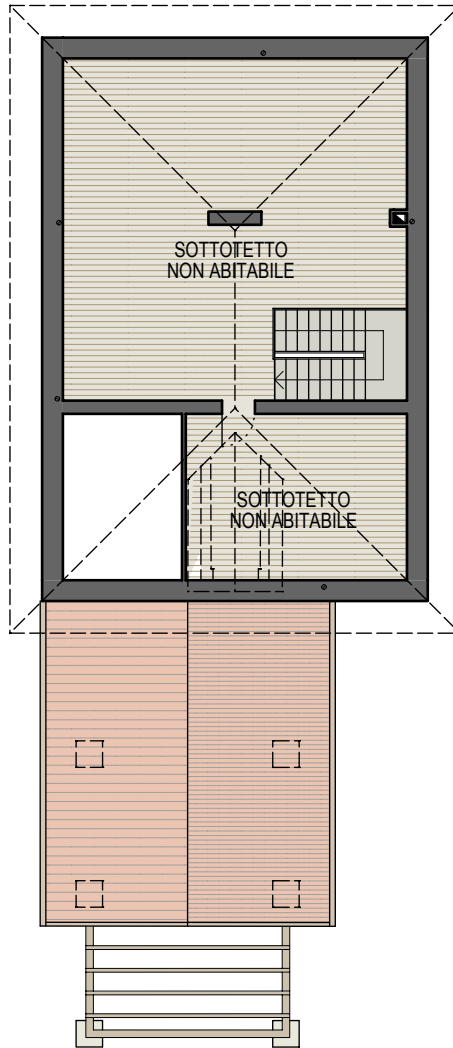
SUPERFICI LORDE:
GROSS AREA:

ABITAZIONE HOME 152,72 mq

TERRAZZI TERRACES 26,75 mq

PIANO PRIMO
FIRST FLOOR

VILLA C: "AL RIO"



SUPERFICI LORDE:
GROSS AREA:

SOTTOTETTO
ATTIC (NOT HABITABLE) 133,67 mq

PIANO SOTTOTETTO
ROOF FLOOR

VILLA C: "AL RIO"